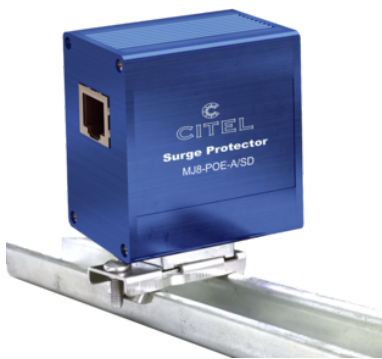
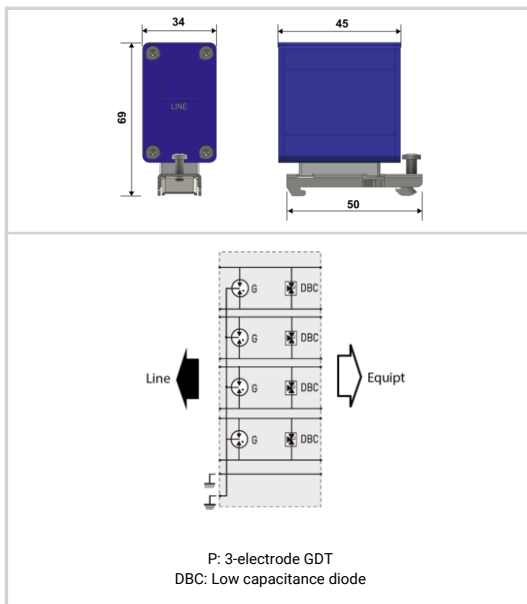


## MJ8-POE-A/SD



- POE++ compatible
- Strong mounting for DIN-rail for vibration environments
- Gigabit Ethernet (Cat.5E)
- Shielded enclosure and connectors
- 2 kA discharge capability
- UL497B certified
- IEC 61643-21, EN 61643-21 compliance



Electrical Characteristics		
Network		Gigabit Ethernet (Cat.5E)
Nominal line voltage	Un	48 Vdc
Max. DC operating voltage	Uc	60 Vdc
Max. frequency	f max.	250 MHz
Max. data rate		10/100/1000 Mbps
Insertion loss		< 1 dB
Max. load current	IL	2000 mA
Protection level <i>Following the test category C3 (IEC61643-21) - Line/Line</i>	Up	70 V
Impulse current <i>2 x 10/350µs Test - D1 Category</i>	Iimp	500 A
Line/Line Nominal discharge current <i>C2 Category</i>	In L/L	500 A
Line/Ground Nominal discharge current <i>8/20µs Test x 10 - C2 Category</i>	In L/PE	2000 A
Mechanical Characteristics		
Technology		GDT+Clamping diode
SPD configuration		8 wires+shielded
Connection to Network		RJ45 shielded connectors Female input/output
Format		Metallic box with connectors input/output
Mounting		Mounting flange,Screw lug, DIN Rail
Accessory(s) provided		DIN rail adapter, screw, screw nut, earthing plate, countersunk screw, cable shoe
Housing material		Aluminium
Operating temperature	Tu	-40/+85°C
Protection rating		IP20
Failsafe mode		Short-circuit - transmission cut-off
Disconnection indicator		Transmission interrupt - default mode 2
Pinout		(1-2)(3-6)(4-5)(7-8)
Dimensions		See diagram
Weight		0.120 kg
Standards		
Standards compliance		IEC 61643-21 / EN 61643-21 / UL497 B IEEE 802-3af/3at/3bt
Certification		UL 497B
Part number		
<b>581545</b>		